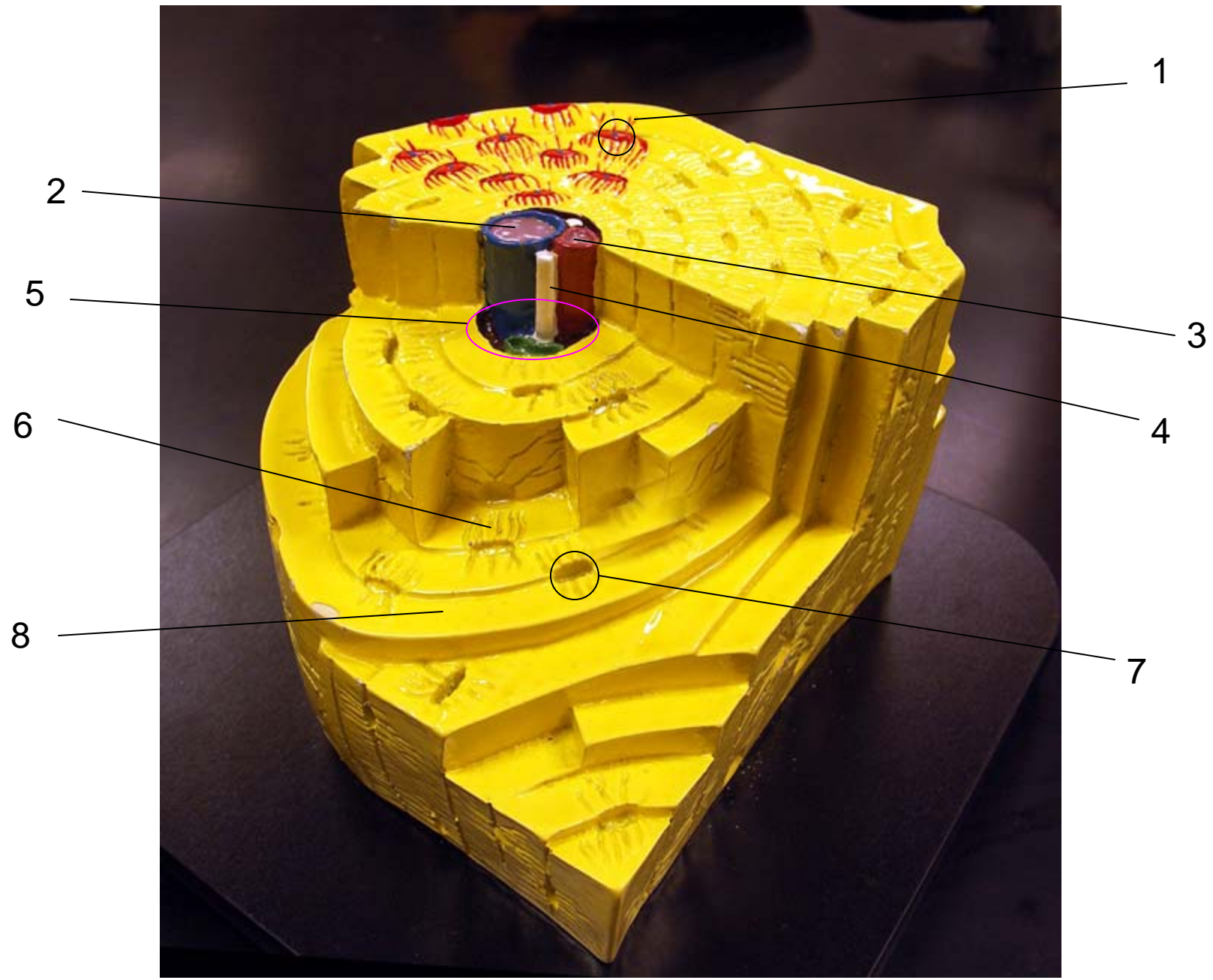


The Osteon

Cliff Belleau / Instructor



9 – What type of bone is represented by this model?

1. Osteocyte
2. Vein
3. Artery
4. Nerve
5. Central (Osteonic / Haversian) Canal
6. Canaliculi
7. Lacuna
8. Lamella / Matrix
9. Compact (Hard) Bone



3

1

2

1. Osteoblast
2. Canalicul
3. Lacuna